

# Progress on Program Development

A staff presentation to the Board

Tara Seeley, Program Officer

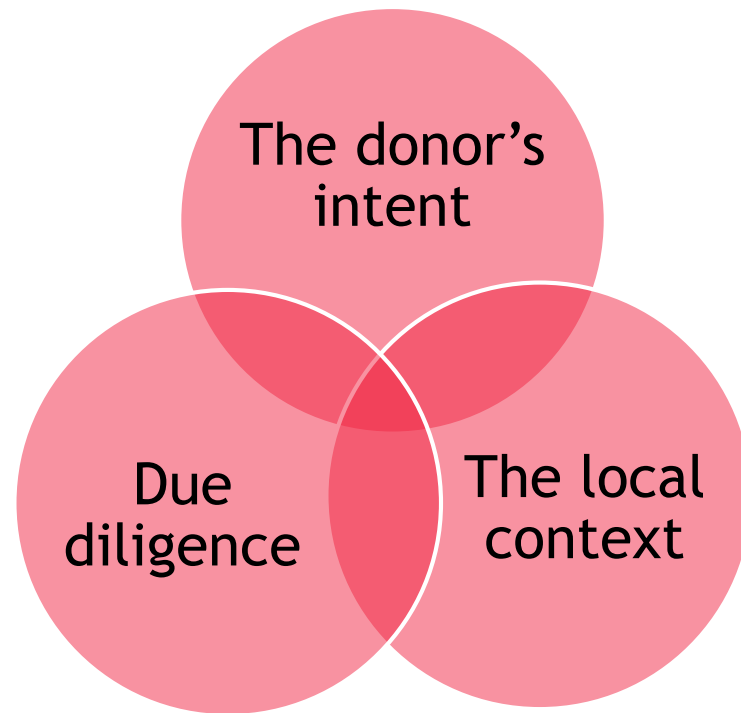
October 2016

# Community development and its goals

- ▶ Program goal: To build and sustain strong communities in Westchester.
- ▶ Priority areas: *Workforce development, self-sufficiency, and empowerment and civic engagement.*

# Civic Engagement for Social Justice— grant-making from the Empowerment Fund

With all grant making...



# With the Empowerment Fund, intent springs from a world view

- ▶ Inherent dignity of each person
- ▶ Community and the common good are priorities
- ▶ Inherent rights and corresponding responsibilities
- ▶ There is a preferential option for the poor: the needs of the poor and vulnerable come first
- ▶ Each person has a right to fully participate in the economy, in political life, and in cultural life
- ▶ Work has an inherent dignity and workers have inherent rights
- ▶ Creation is to be carefully stewarded
- ▶ The human family is one family, called to solidarity with one another
- ▶ The role of government is to uphold human dignity and rights and to promote the common good
- ▶ Peace is the result of “right relations”- of justice

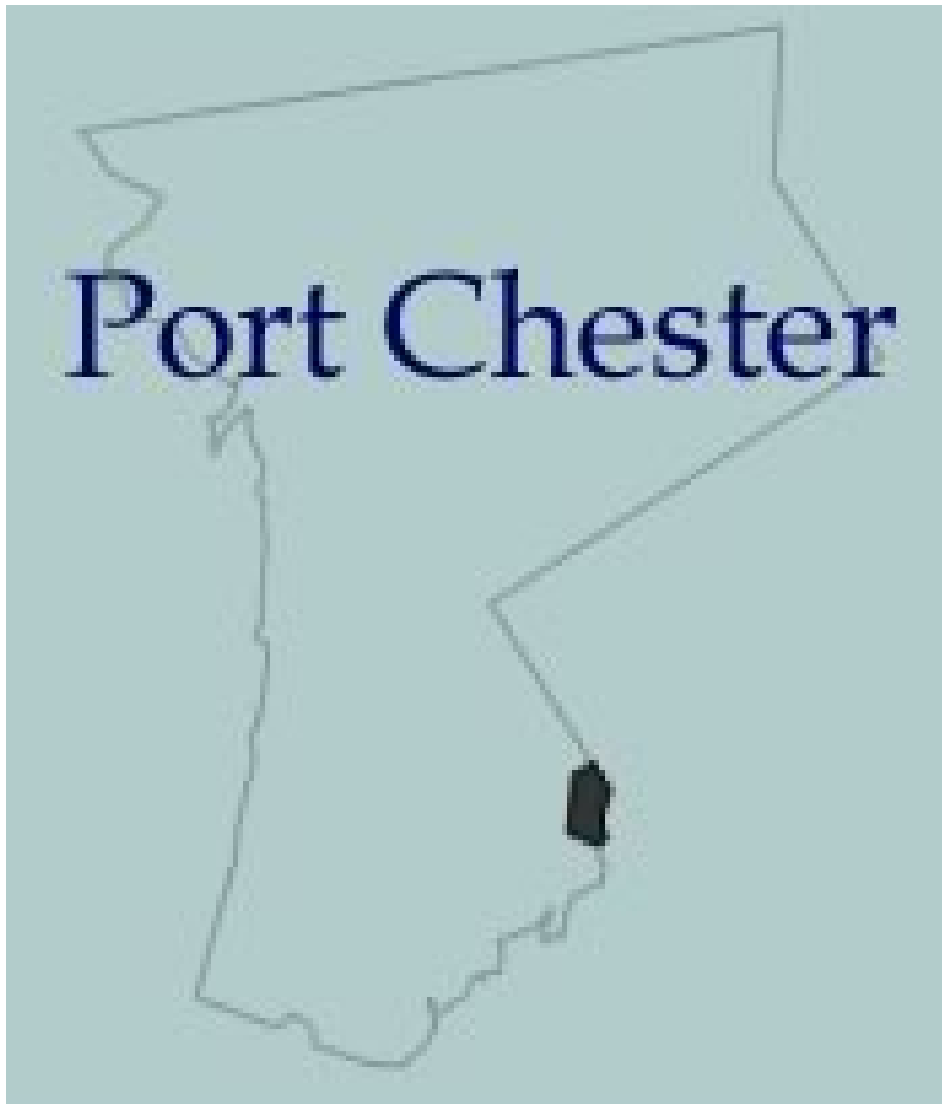
# ....an opportunity to develop a social justice program....

“...to be used...to promote social justice and the transformation of systems and structures that perpetuate poverty, oppression, and injustice....”

- ▶ There is a national body of work we can learn from—social justice funding is well-established
- ▶ There are key concepts in social justice grant-making
  - ▶ Grass-roots groups, grass-roots organizing
  - ▶ self-help and self-determination
  - ▶ Empowerment

# Organizing and leading for change in Port Chester

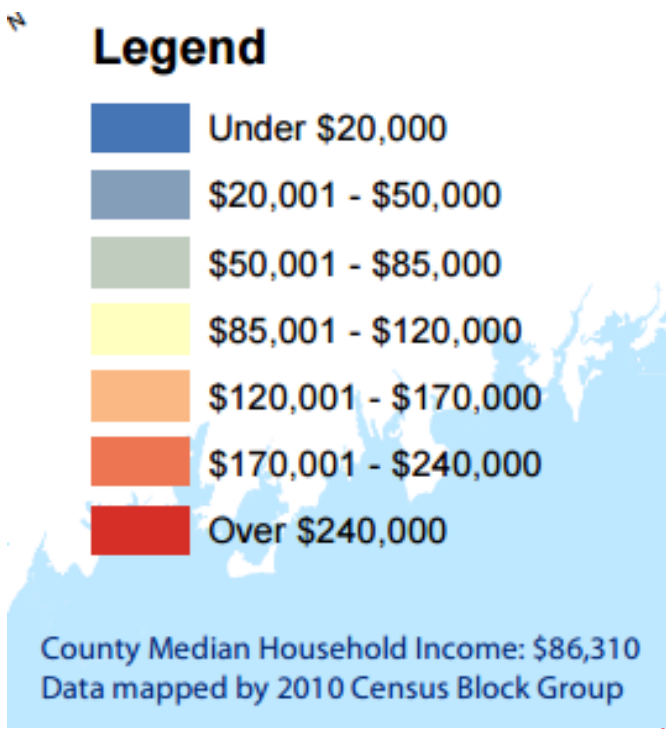
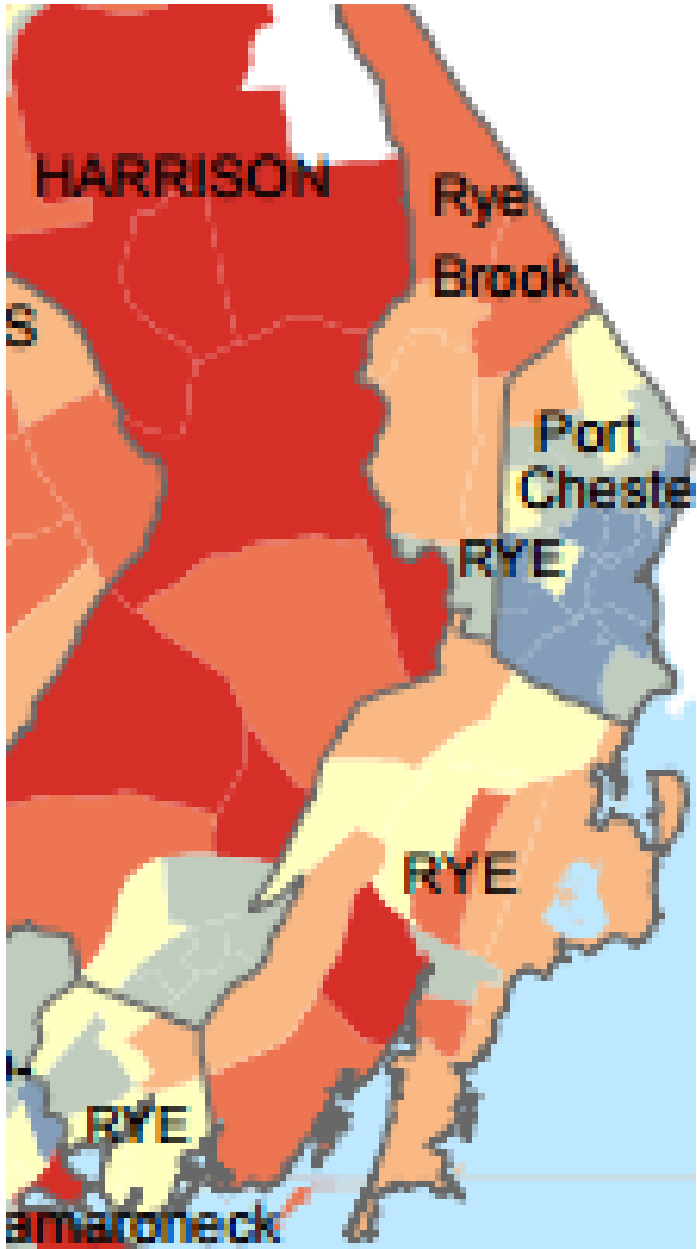
- ▶ Don Bosco Workers: county-wide justice for low-wage workers
- ▶ Sustainable Port Chester Alliance: harnessing economic engine of re-development to increase access to job training, quality jobs, and affordable housing



- ▶ 2.2 square miles
- ▶ Population of 28,967 (2010)
- ▶ 59% of residents are Hispanic
- ▶ Westchester's most diverse community, with a long-established African-American community
- ▶ Fastest growing population of all Westchester's villages, and the most densely settled
- ▶ From shipping to manufacturing, from manufacturing to retail and restaurants
- ▶ Late 19<sup>th</sup> century-early 20<sup>th</sup> century immigrants were Irish, Italian, Polish and German
- ▶ Latest immigrants are from Central and South America and the Caribbean

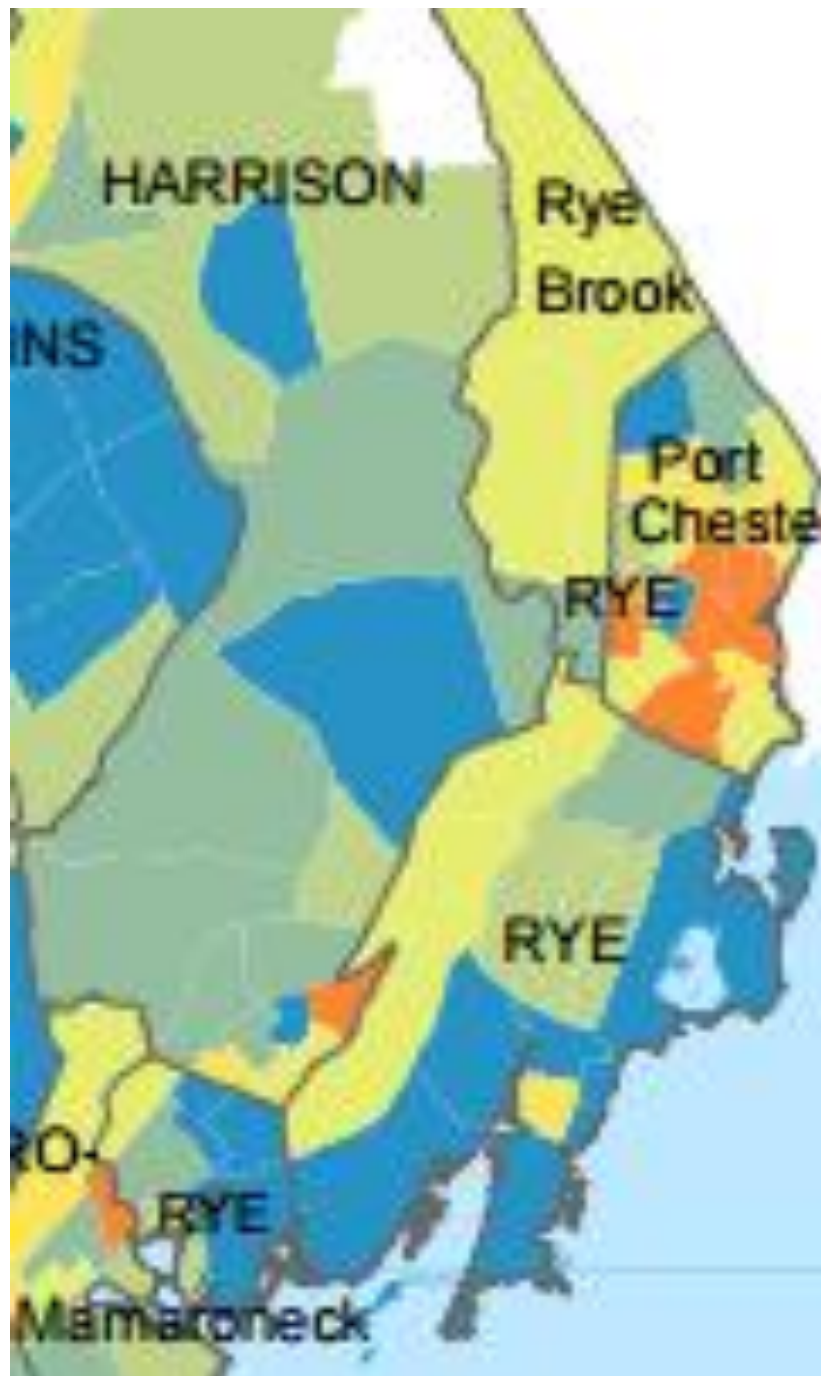
Sources: *Housing Conditions in the Village of Portchester Building, Urbanomics (2014)*;  
[villageofportchesterny.com](http://villageofportchesterny.com)

# Median Incomes

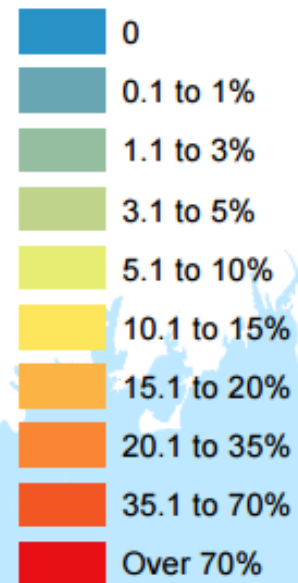




# Poverty Rates



## Legend



County Median: 4.4%

Based on aggregate 2007-2011 ACS Data

Mapped by 2010 Census Block Group

# High Housing Costs, Crowded and Illegal Units

- ▶ 54% of all households (home owners and renters) paid more than 30% of their income to meet housing costs
- ▶ 60% of renters—3,000 households- paid more than 30% of their income to meet housing costs
- ▶ 20% of all residential units were found to have “unlawful occupancy”:
  - ▶ Attic and basement apartments
  - ▶ Split units
  - ▶ Single Room Occupancies

Sources: *Housing Conditions in the Village of Port Chester, Urbanomics (2014)*; *Village of Portchester Building Department (2014)*

# What is the organizing, and what is the change, what is more just?

- ▶ Marginalized individuals are working to create solutions to a shared challenge
- ▶ The effort is broadly inclusive
- ▶ Possible solutions have been well-researched
- ▶ The efforts, if successful, create long-term change
- ▶ The effort expands civic participation: ordinary residents are presenting solutions to elected officials and other policy makers

# Workforce development

A maturing portfolio in a dynamic context

An opportunity for WCF

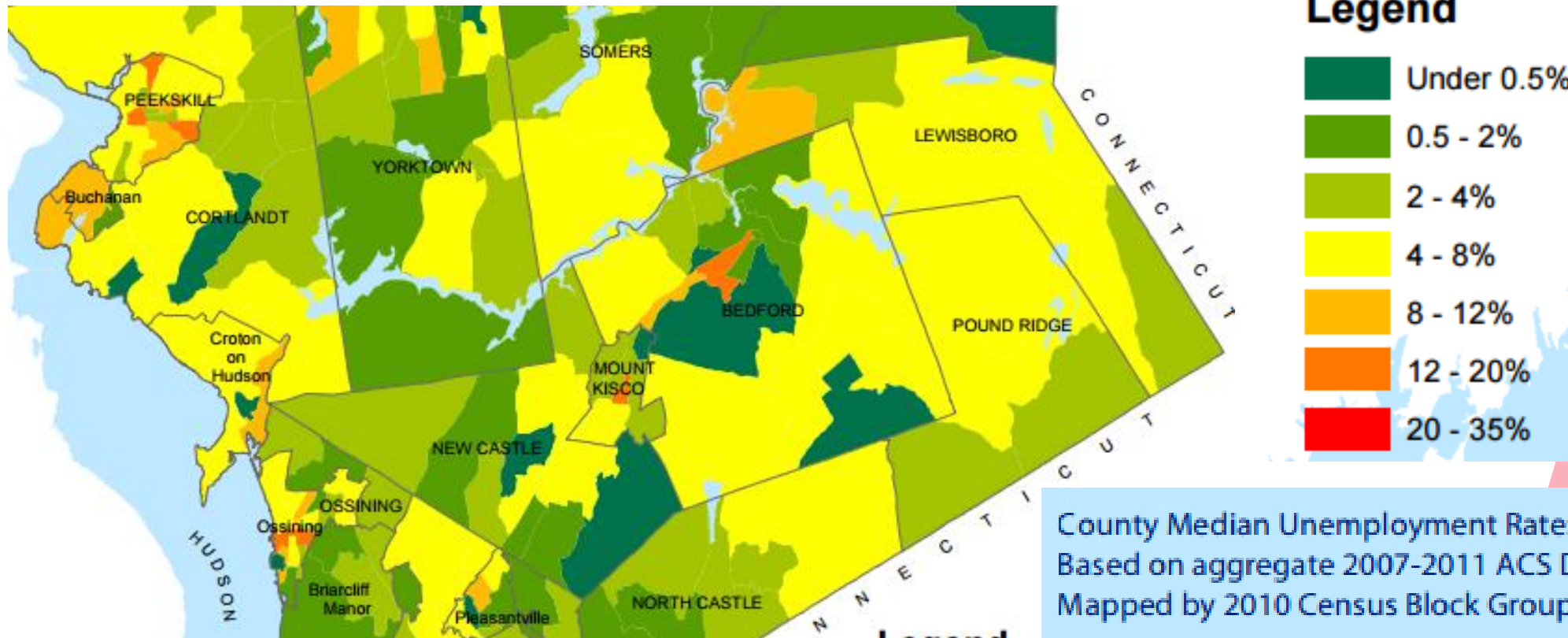
to lead

to be an excellent partner

# Context for advancing the WCF workforce development portfolio

- ▶ “Best Practices” for achieving a more effective local workforce development outcomes
  - ▶ Two clients: the job-seeker **AND** employers/the business community
  - ▶ Close attention to data about the local economy- what are the available and emerging jobs? Where is the local economy growing?
  - ▶ Key role of employers in identifying the skills needed to fill those jobs
  - ▶ Emphasis on “middle skills”- more than high school but less than a four year degree
  - ▶ Emphasis on “stackable credentials,” and career pathways

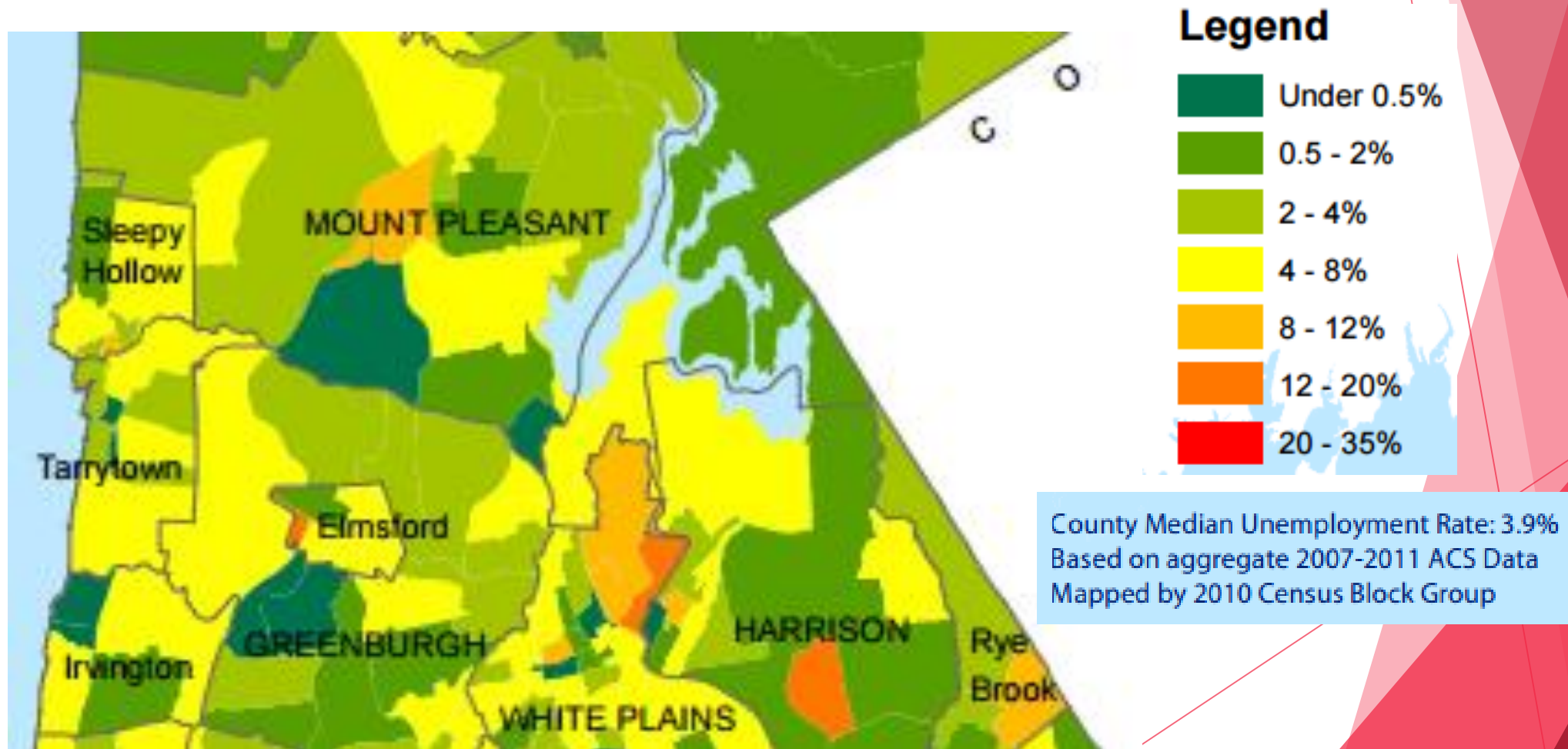
# Snapshot of unemployment rates - north (2010 Census)



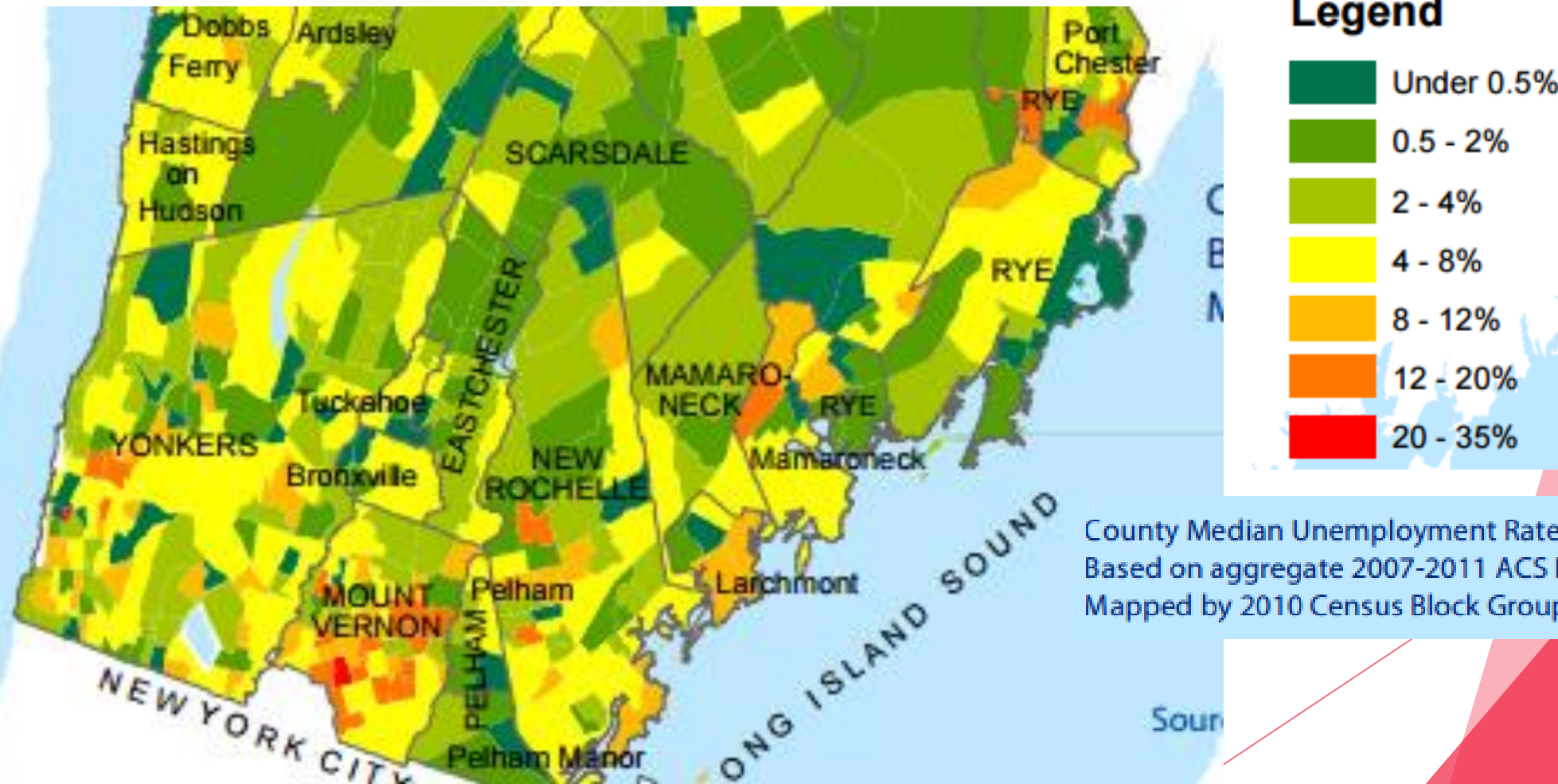
County Median Unemployment Rate: 3.9%  
Based on aggregate 2007-2011 ACS Data  
Mapped by 2010 Census Block Group



# Snapshot of unemployment rates -mid (2010 Census)



# Snapshot of unemployment rates -south (2010 Census)



County Median Unemployment Rate: 3.9%  
Based on aggregate 2007-2011 ACS Data  
Mapped by 2010 Census Block Group



# Context for advancing the WCF workforce development portfolio

- ▶ Local dynamism
  - ▶ Relatively new leadership at Westchester Community College
  - ▶ Large federal grant awards to the local Workforce Investment Board
  - ▶ Engagement of the two county-wide business organizations
  - ▶ Nonprofit organizations increasingly engaged
  - ▶ Recently completed report on “in-demand” jobs can guide local efforts

# Maturing portfolio- renewal grant recommendation

- ▶ Progress at the White Plains Education and Training Center
  - ▶ Increased emphasis on training for “in-demand jobs”
  - ▶ Increased emphasis on “stackable credentials”
  - ▶ Developing collaboration with White Plains Hospital
  - ▶ Productive focus on building relationships with employers
  - ▶ Streamlining by bringing One-Stop and WCC into the Center

# Maturing portfolio— new grant recommendation to pilot effort for better results

- ▶ Pilot effort to attain better outcomes: Westhab
  - ▶ “Job readiness training” alone is not enough for the “never-before employed” or the long-term unemployed
  - ▶ Assistance meeting challenges and overcoming barriers can lead to better long-term job retention
  - ▶ Longer job retention leads to higher wages over time

# WCF as partner and as leader: long term goal is a more effective system

- ▶ Funder partnerships
  - ▶ JP Morgan Chase Global Philanthropy
- ▶ Grantee partnerships
  - ▶ A relationship beyond grant dollars, strengthening capacity and introducing other resources
    - ▶ NYCT Evaluation Workshop
- ▶ As a leader, WCF can leverage
  - ▶ our knowledge of community based organizations
  - ▶ Our existing partnerships, including with NYCT